

S911

DIY mini house kits - Strawberry Milkshake



S911 Instruction manual

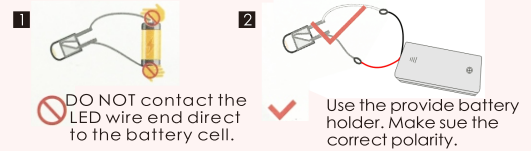
NOTICE OF ASSEMBLE

Tips for assembling

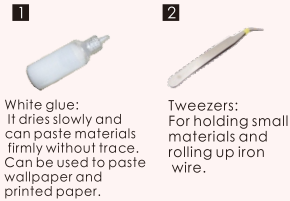
1. Pictures shown on the package may be slightly different from the actual product.
2. All the materials are taken in the operation step, put the remaining materials back into the original pocket until the installation is completed. (Avoid material loss during installation)
3. The dimensions indicated in the step diagram are "cm".
4. If there have template paper material, please cut the material according to the template to avoid mistakes..
5. According to the part rule example at the bottom of this page, refer to the part on the part number drawing, find the material object and compare with the material list, confirm and install. (Wooden parts only)
6. Glue should not be applied too much, so as not to dry longer, overflow will affect the effect of the finished product.
7. Part shapes may differ from the photographs depending on the production batch

Testing on LED function

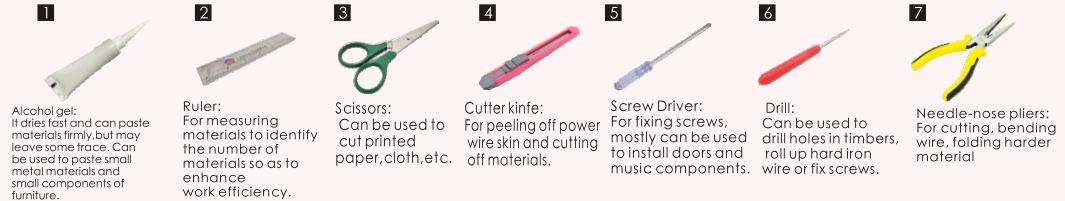
Be sure to test the LED lights before making the lighting, note that the LED white wire to the negative, gray wire to the positive reference to the following figure operation test.



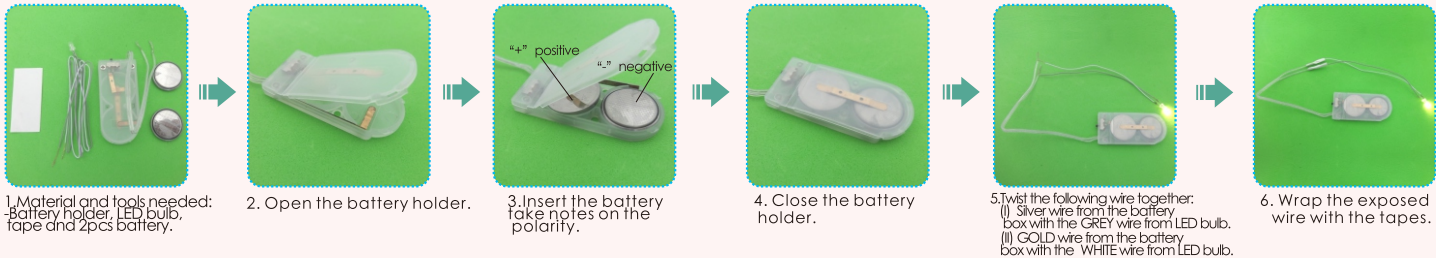
Product comes with tool:



Bring your own tools:

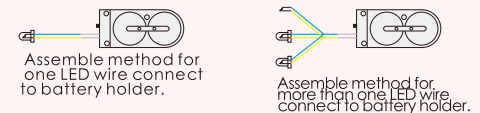


How to assemble the battery holder



Example of parts rule:

A01: The parts are directly in the box.; B01: parts in bag B; C01: part in bag C, and so on.
(Note: display the printing paper A05-01 in the step: the printing paper is placed directly in the box, part number is A05-01)



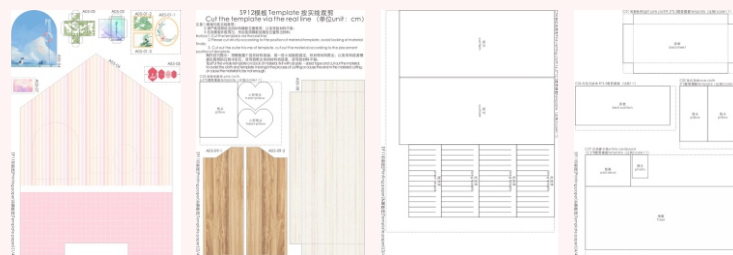
details of miniature kit

Name	Material package
printing paper	Bag A-A05(All printing and template papers are shown on A05 paper,total 2piece of A5)
window	B bag + printing paper
chair	B bag + C bag
table	B bag + D bag
mosquito	B bag +C bag
bed	B bag +C bag + D bag
floor lamp	D bag
potted plant	D bag
bottle	D bag
photo	C bag + printing paper
little box	printing paper
small love	printing paper
outer frame	A bag + printing paper
battery holder	D bag

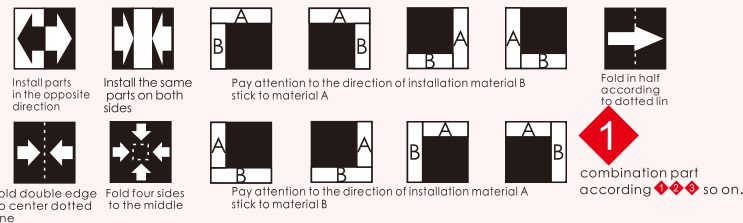
Thumbnail of material list(reference only)



Thumbnail of printing paper & template paper(reference only)



Symbol description used

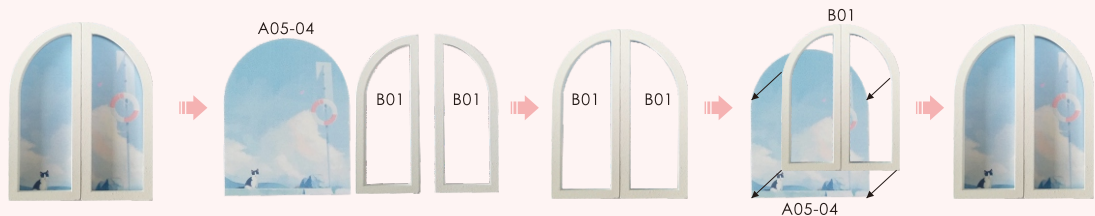


Welcome to the little DIY world, now come with me!



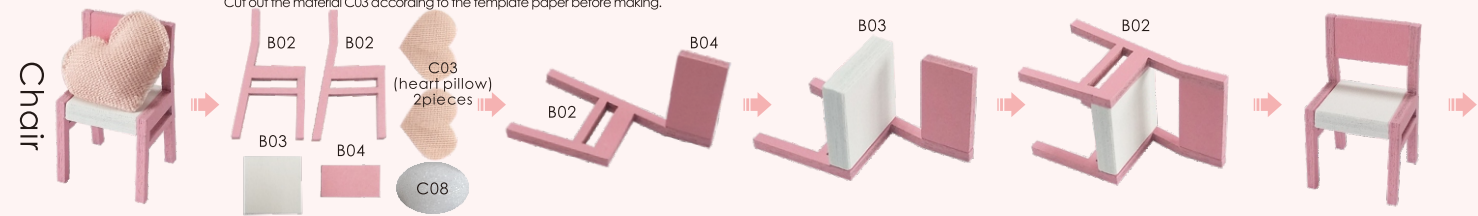
please follow me slowly!

Window

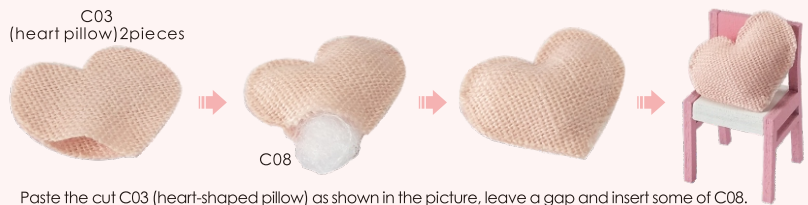


Cut out the material C03 according to the template paper before making.

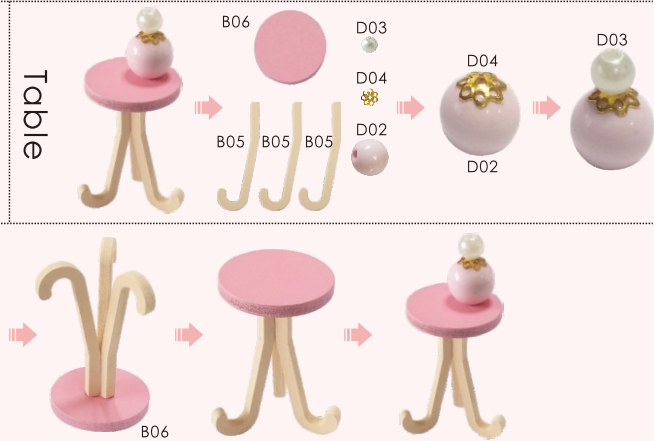
Chair



C03 (heart pillow) 2pieces

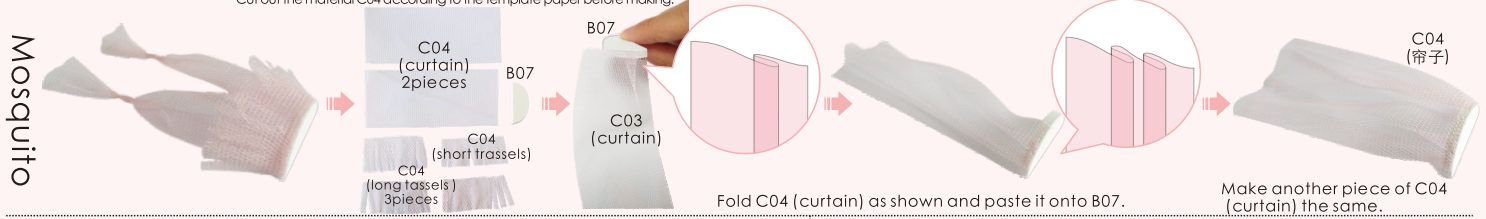


Table



Mosquito

Cut out the material C04 according to the template paper before making.



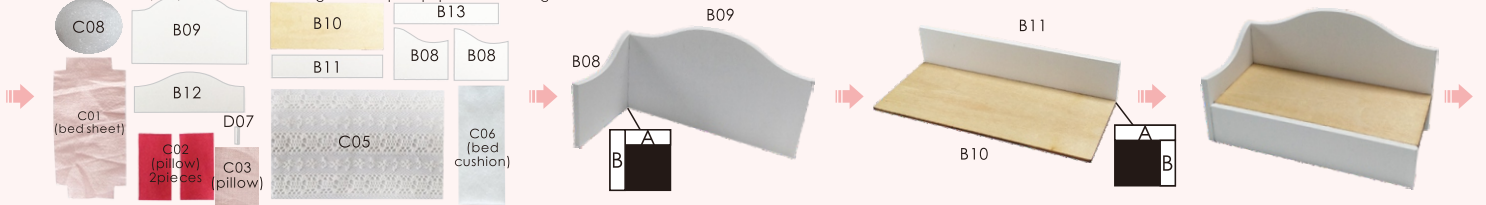
keep it up!

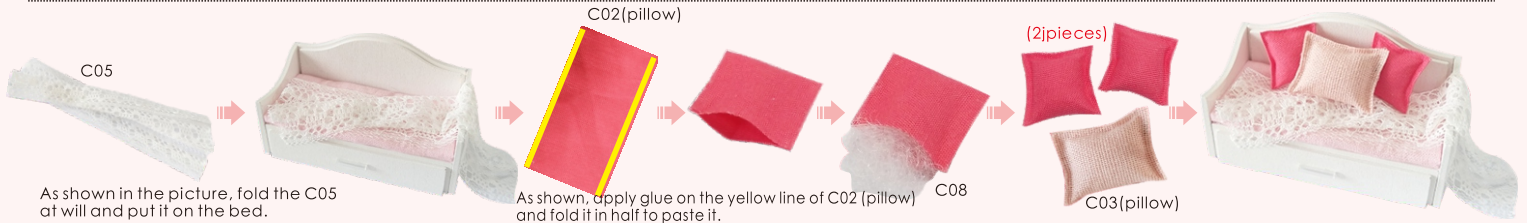
Bed



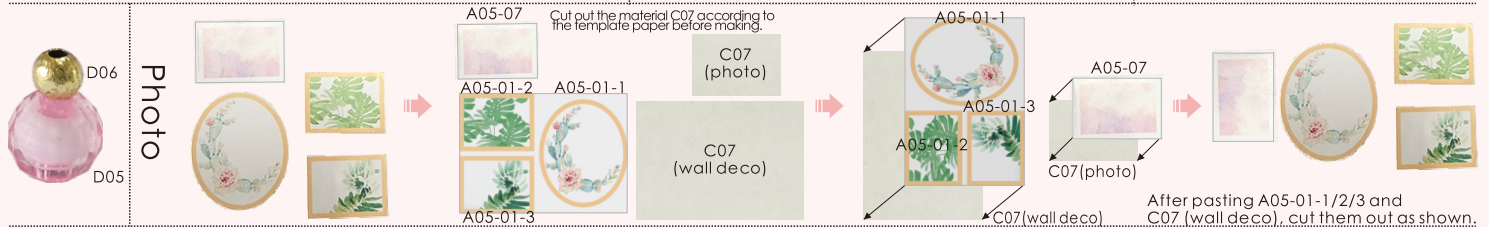
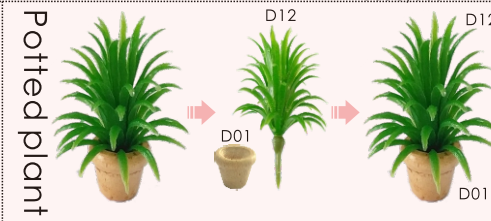
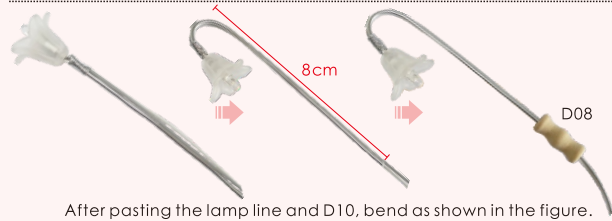
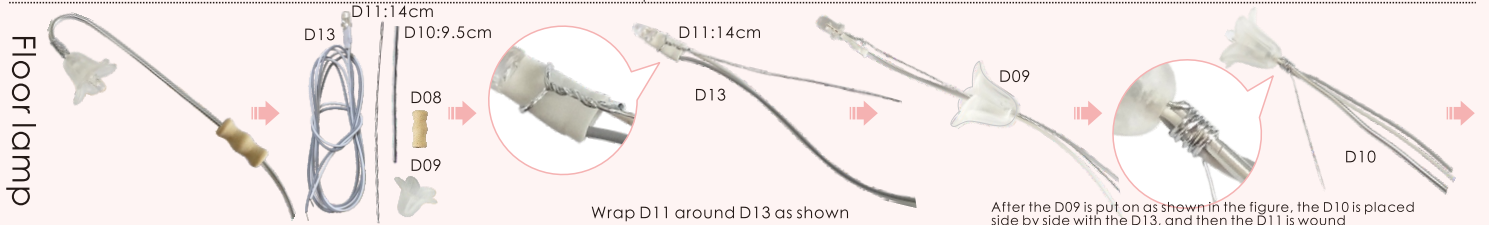
As shown in the picture, after a small amount of glue is dropped on the 4cm place, tighten it.

Cut out the material C01,C02,C03 and C06 according to the template paper before making.





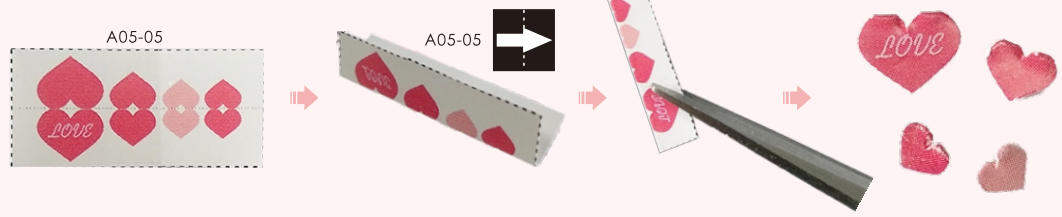
Floor lamp



Little box



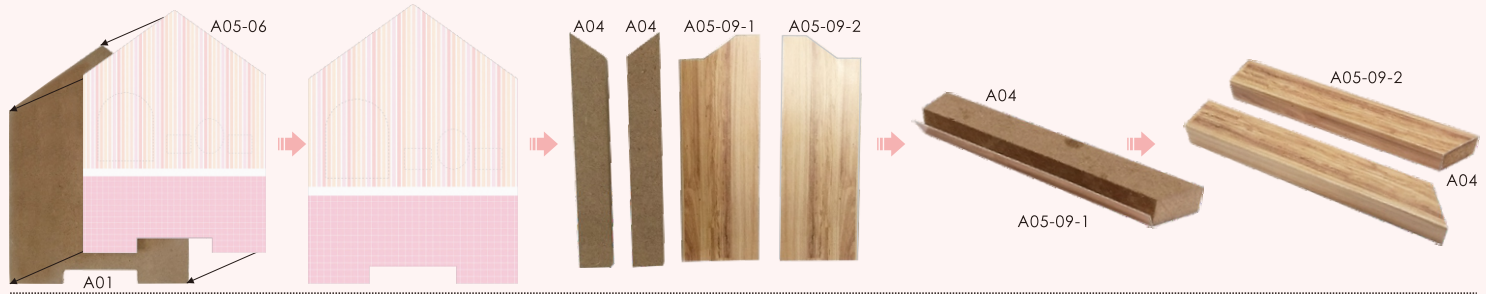
Small love

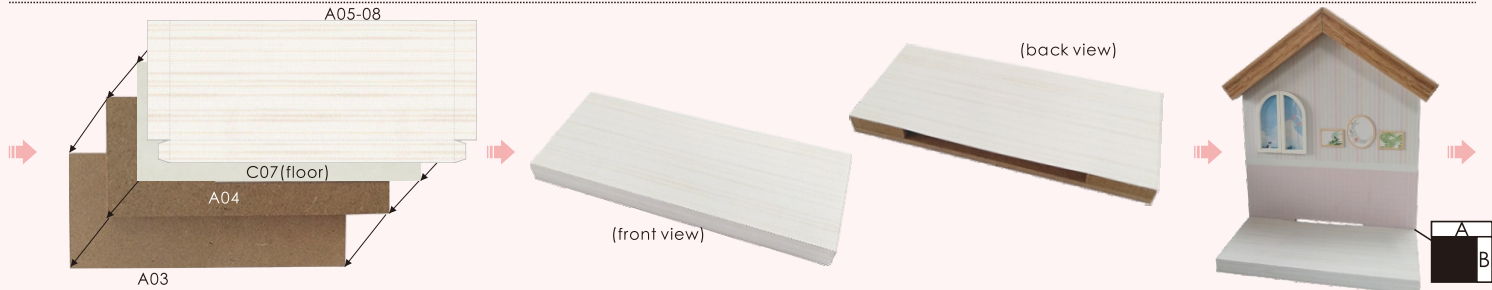


Outer frame



After folding and pasting A05-07, cut it out as shown in the figure.







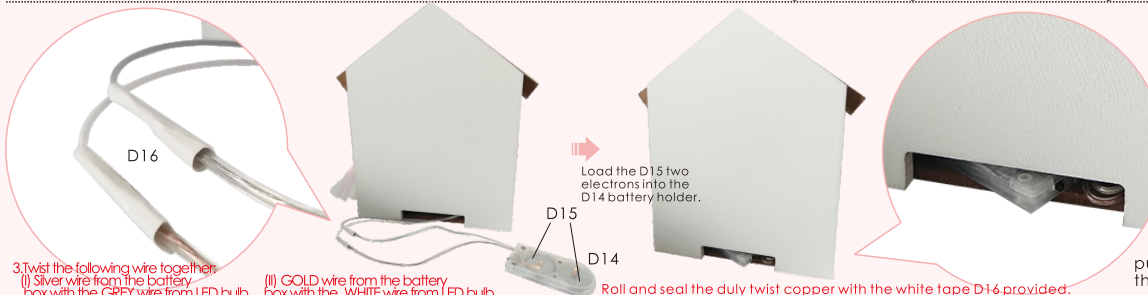
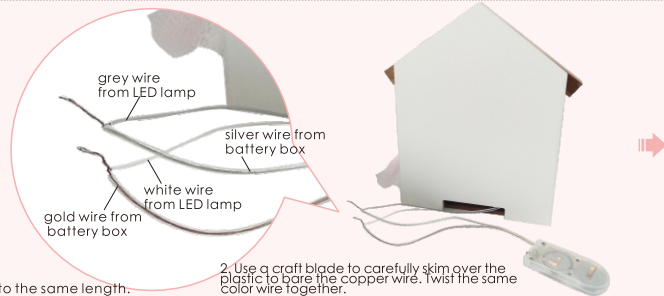
How to assemble the battery holder

Statement: the lamp wires cannot be inserted into the output socket.

- - Can use 3V button batteries
- - Please notice the place of anode and cathode when pit in the batteries
- - Rechargeable batteries are not blunt electricity
- - Rechargeable batteries can only be charged under adult supervision
- - Rechargeable batteries should be removed from the toy before charging
- - Different types of batteries cannot mix;
- - Do not mix new batteries in use with semi-used batteries.
- - Run out of battery should be removed from the toy
- - The power shall not be short circuit



You are doing great.
We will finish it soon.



Good for you!
We finished it !

put the battery box into the empty slot as shown in the picture.



Photo Gallery





Attention: Please keep the instruction for future enquires after installation.